



# DESSERT

## **NARAMATA APPLE TART**

---

*Honey caramel, D Dutchmen Dairy sour cream glaze*

12

## **PUMPKIN BRIOCHE BREAD PUDDING**

---

*Maple crèmeux, pumpkin seed brittle*

12

## **LOCAL CREAM CHEESECAKE**

---

*Compressed pears, Okanagan fruit sorbet, meringue*

12

## **MERROIR DARK CHOCOLATE BAR**

---

*Milk chocolate crumble, Naramata walnut praline*

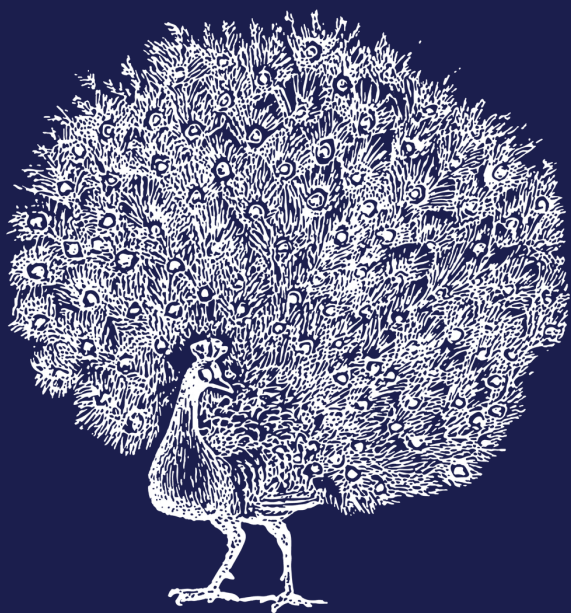
12

## **LEIGH'S CHOCOLATES**

---

*Six handmade artisan chocolates using Merroir Milk and Dark in seasonal flavours*

12



Dessert makes everything better